

BONES

Sax Alto

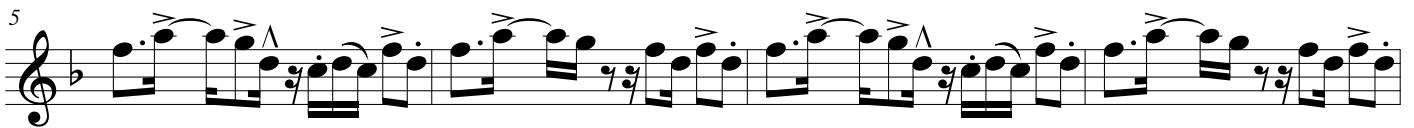
Arnold Pol
Omar El- Barkaoui

Céllule 1

♩ = 120



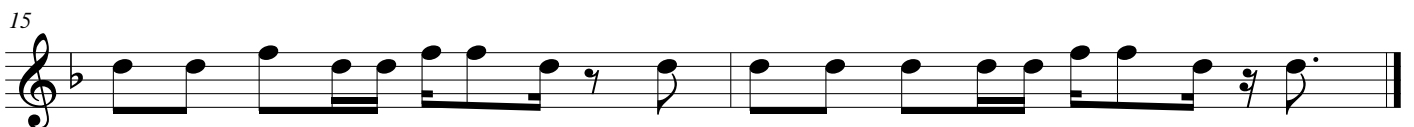
Céllule 2



Céllule 3



let the horns get - in to your bones let the horns get - in to your bones



let the horns get - in to your bones so let the sound get - in to your bones hey

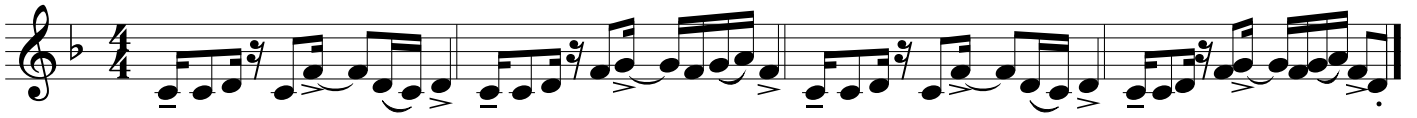
BONES

Sax Baryton

Arnold Pol
Omar El-Barkaoui

Céllule 1

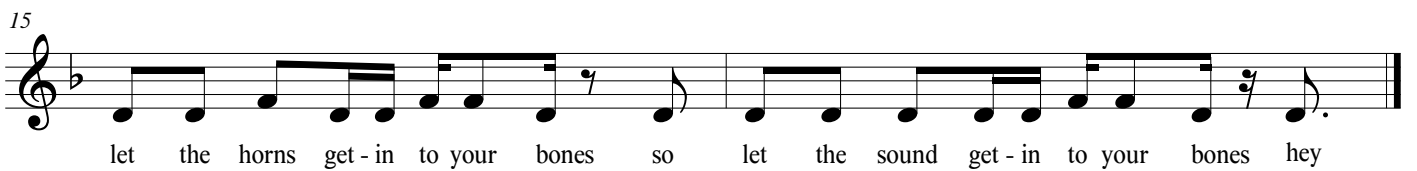
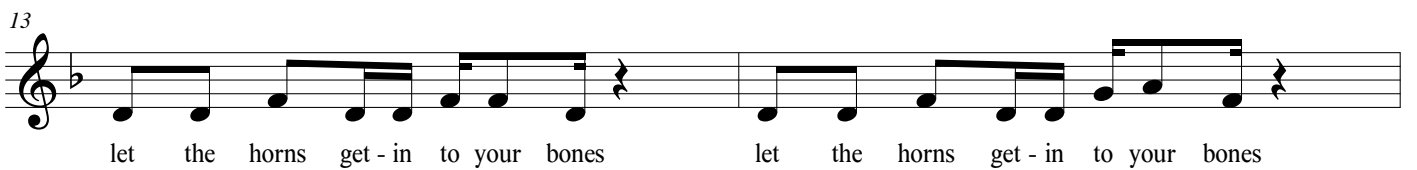
♩ = 120



Céllule 2



Céllule 3



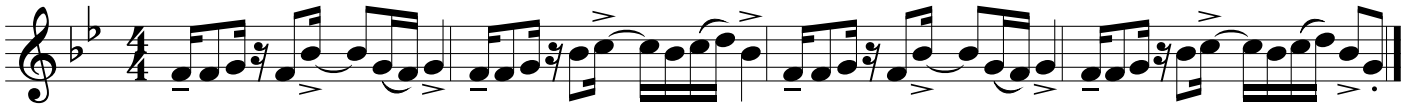
BONES

Sax Bass

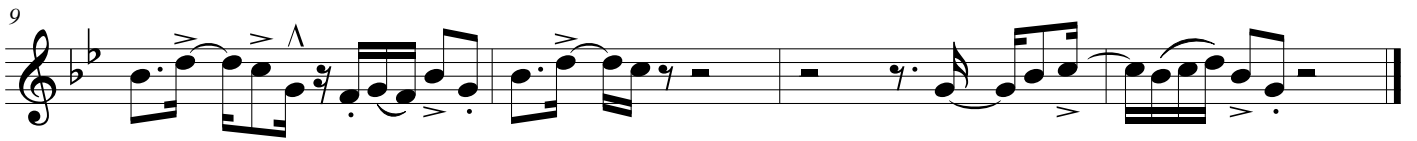
Arnold Pol
Omar El-Barkaoui

Céllule 1

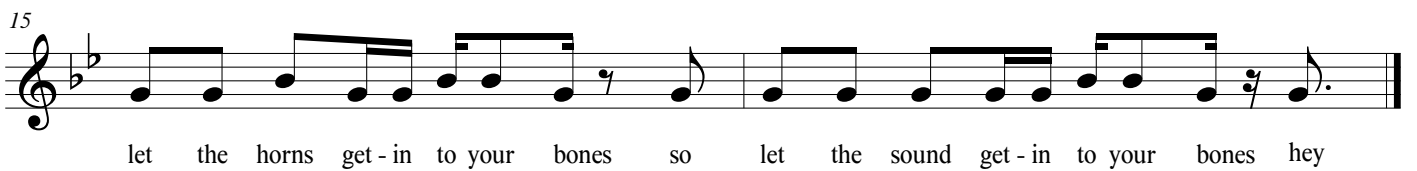
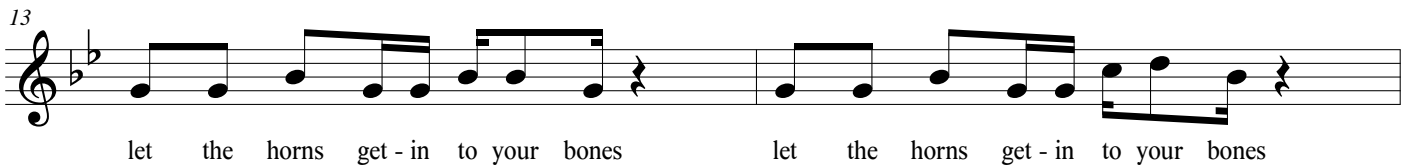
♩ = 120



Céllule 2



Céllule 3



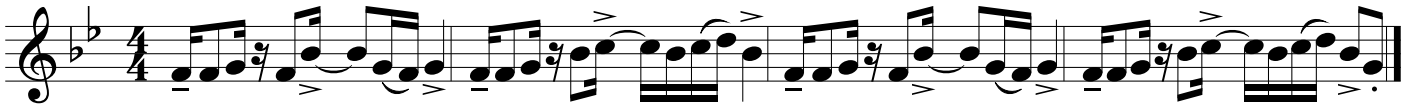
BONES

Sax Soprano

Arnold Pol
Omar El- Barkaoui

Céllule 1

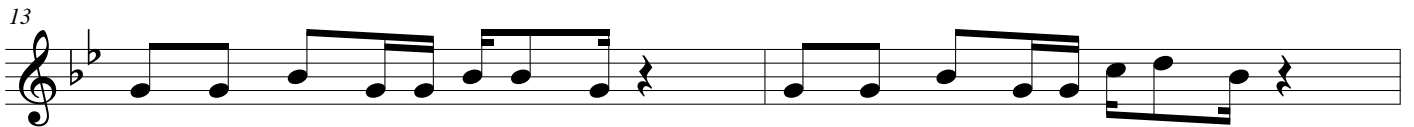
♩ = 120



Céllule 2



Céllule 3



let the horns get - in to your bones let the horns get - in to your bones



let the horns get - in to your bones so let the sound get - in to your bones hey

BONES

Sax Tenor

Arnold Pol
Omar El-Barkaoui

Céllule 1

♩ = 120

Céllule 2

5

9

Céllule 3

13

let the horns get - in to your bones let the horns get - in to your bones

15

let the horns get - in to your bones so let the sound get - in to your bones hey

BONES

Arnold Pol

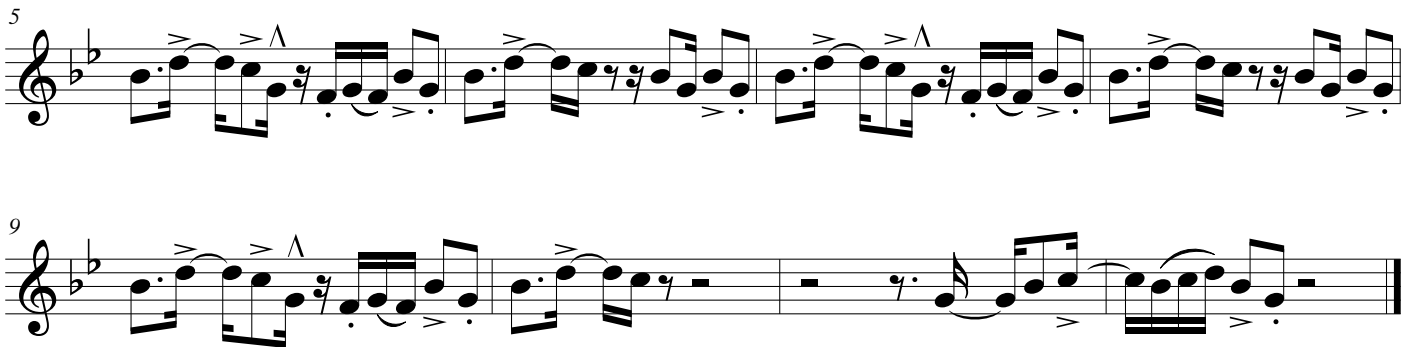
Trompette Sib

Céllule 1

♩ = 120



Céllule 2



Céllule 3

13

let the horns get - in to your bones let the horns get - in to your bones

15

let the horns get - in to your bones so let the sound get - in to your bones hey

Musical notation for Cellule 3, measures 13-16. The music is in 4/4 time, key of B-flat major, and features a simpler rhythmic pattern with quarter and eighth notes. The lyrics are written below the notes.

JUBEL

Klingande

Céllule 1

Musical score for Céllule 1, featuring Soprano Sax, Alto Sax, Tenor Sax, and Baritone Sax. The score is in 4/4 time and G major (one sharp). Each instrument part consists of a single whole note in every measure of the four-measure phrase.

Instrument	Measure 1	Measure 2	Measure 3	Measure 4
Soprano Sax	G4	A4	B4	C5
Alto Sax	F#4	G4	A4	B4
Tenor Sax	E4	F#4	G4	A4
Baritone Sax	D4	E4	F#4	G4

Céllule 2

Musical score for Céllule 2, featuring Soprano Sax (S. Sx.), Alto Sax (A. Sx.), Tenor Sax (T. Sx.), and Baritone Sax (B. Sx.). The score is in 4/4 time and G major (one sharp). The Soprano Sax part begins at measure 5. Each instrument part consists of eighth notes in every measure of the four-measure phrase.

Instrument	Measure 1	Measure 2	Measure 3	Measure 4
S. Sx.	G4	A4	B4	C5
A. Sx.	F#4	G4	A4	B4
T. Sx.	E4	F#4	G4	A4
B. Sx.	D4	E4	F#4	G4

Céllule 3

9

S. Sx. Hands Feet

A. Sx. Hands Feet

T. Sx. Hands Feet

B. Sx. Hands Feet

Céllule 4

13

S. Sx. *sfz*

A. Sx. *sfz*

T. Sx. *sfz*

B. Sx. *sfz*

PICK UP THE PIECES

INTRO

Musical score for the Intro section, featuring four saxophone parts: SAXOPHONE SOPRANO, SAXOPHONE ALTO 1, SAXOPHONE T^RNO^R, and SAXOPHONE BARYTON. The score is in 4/4 time and consists of two measures. The Soprano and Alto parts play a melodic line with accents, while the Tenor and Baritone parts play a rhythmic accompaniment with accents.

CELLULE 1

Musical score for Cellule 1, featuring four saxophone parts: Sx. S., Sx. A.1, Sx. T., and Sx. B. The score is in 4/4 time and consists of four measures. The Soprano part starts with a dynamic marking of 5 . The parts play a melodic line with accents and slurs.

CELLULE 2

Musical score for Cellule 2, featuring four saxophone parts: Sx. S., Sx. A.1, Sx. T., and Sx. B. The score is in 4/4 time and consists of four measures. The Soprano part starts with a dynamic marking of 5 . The parts play a rhythmic accompaniment with accents.

CELLULE 3

Musical score for Cellule 3, featuring four staves (Sx. S., Sx. A. 1, Sx. T., Sx. B.) with complex rhythmic patterns. The score is written in treble clef with a key signature of one flat. The Sx. S. staff has a melodic line with slurs and accents. The Sx. A. 1 staff has a similar melodic line. The Sx. T. staff has a rhythmic line with eighth notes and slurs. The Sx. B. staff has a rhythmic line with eighth notes and slurs.

CELLULE 4

Musical score for Cellule 4, featuring four staves (Sx. S., Sx. A. 1, Sx. T., Sx. B.) with a simple rhythmic pattern and lyrics. The score is written in treble clef with a key signature of one flat. The lyrics are: PICK UP THE PIE - - CEG PICK UP THE PIE - - CEG. The Sx. S. staff has a melodic line with slurs and accents. The Sx. A. 1 staff has a similar melodic line. The Sx. T. staff has a rhythmic line with eighth notes and slurs. The Sx. B. staff has a rhythmic line with eighth notes and slurs.